

\$699,500 - 17624 72 Street, Edmonton

MLS® #E4417834

\$699,500

3 Bedroom, 2.50 Bathroom, 2,554 sqft

Single Family on 0.00 Acres

Crystallina Nera East, Edmonton, AB

Your Dream Coventry Home w/ DECK Awaits! Step into modern luxury w/ this beautifully crafted home, designed w/ 9' ceilings for a bright & open feel. The chef-inspired kitchen is a true showstopper, w/ gorgeous cabinetry, quartz counters, tile backsplash, S/S appliances, & BUTLER pantry. The Great Room flows seamlessly into the dining nook, creating the perfect space for gatherings. A half bath & mudroom complete the main floor. Upstairs a luxurious primary suite with a 5pc ensuite featuring dual sinks, free standing soaker tub, & walk-in closet. Two additional bedrooms, main bath, bonus room, & laundry provide the perfect balance of comfort & functionality. Built with exceptional craftsmanship & meticulous attention to detail, every Coventry home is backed by the Alberta New Home Warranty Program. *Home is under construction, photos are not of actual home, some finishings may vary, home does not have a fireplace, some photos virtually staged*

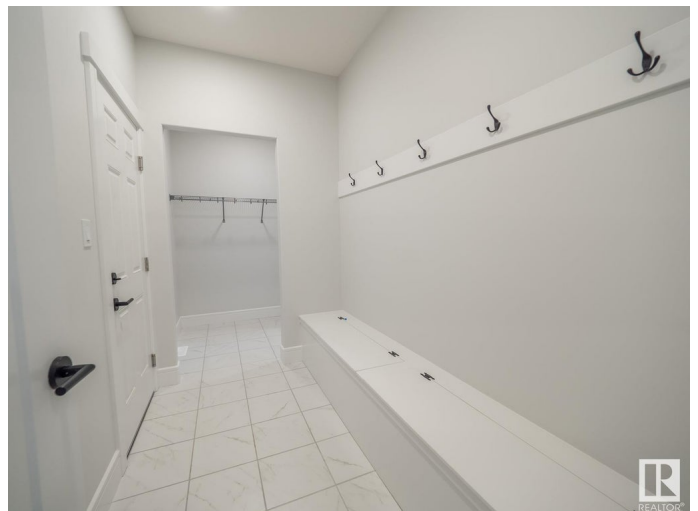
Built in 2024

Essential Information

MLS® # E4417834

Price \$699,500

Bedrooms 3



Bathrooms	2.50
Full Baths	2
Half Baths	1
Square Footage	2,554
Acres	0.00
Year Built	2024
Type	Single Family
Sub-Type	Detached Single Family
Style	2 Storey
Status	Active

Community Information

Address	17624 72 Street
Area	Edmonton
Subdivision	Crystallina Nera East
City	Edmonton
County	ALBERTA
Province	AB
Postal Code	T5Z 0W9

Amenities

Amenities	Carbon Monoxide Detectors, Ceiling 9 ft., Deck, Detectors Smoke, Smart/Program. Thermostat, Vinyl Windows, HRV System, 9 ft. Basement Ceiling
Parking	Double Garage Attached

Interior

Interior Features	ensuite bathroom
Appliances	Dishwasher-Built-In, Hood Fan, Oven-Microwave, Refrigerator, Stove-Gas
Heating	Forced Air-1, Natural Gas
Stories	2
Has Basement	Yes
Basement	Full, Unfinished

Exterior

Exterior	Wood, Stone, Vinyl
Exterior Features	Golf Nearby, Playground Nearby, Public Transportation, Schools, Shopping Nearby

Roof	Asphalt Shingles
Construction	Wood, Stone, Vinyl
Foundation	Concrete Perimeter

Additional Information

Date Listed	January 13th, 2025
Days on Market	110
Zoning	Zone 28

DATA IS DEEMED RELIABLE BUT IS NOT GUARANTEED ACCURATE BY THE REALTORS® ASSOCIATION OF EDMONTON. COPYRIGHT 2025 BY THE REALTORS® ASSOCIATION OF EDMONTON. ALL RIGHTS RESERVED.Trademarks are owned or controlled by the Canadian Real Estate Association (CREA) and identify real estate professionals who are members of CREA (REALTOR®, REALTORS®) and/or the quality of services they provide (MLS®, Multiple Listing Service®)

Listing information last updated on May 3rd, 2025 at 6:17am MDT