

\$119,900 - N/A, Edmonton

MLS® #E4429887

\$119,900

2 Bedroom, 1.00 Bathroom, 811 sqft
Condo / Townhouse on 0.00 Acres

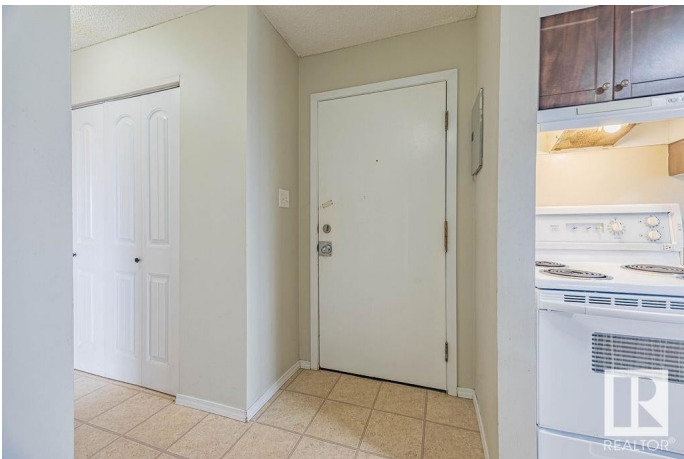
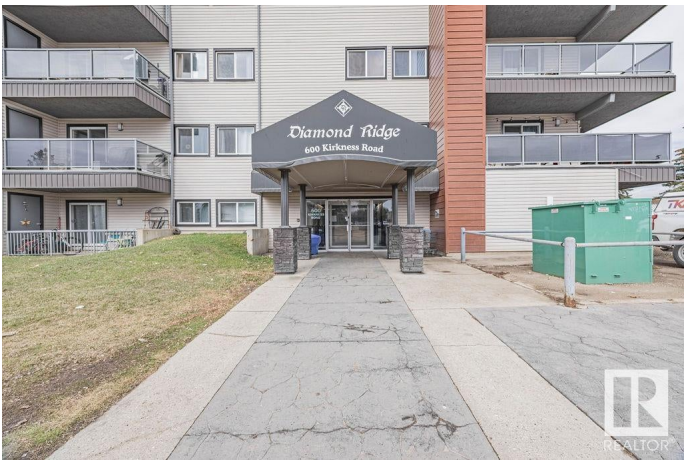
Kirkness, Edmonton, AB

This corner unit condo offers exceptional value, ideal for first-time buyers or investors. Conveniently located near schools, public transit, Manning Town Centre, and Anthony Henday, itâ€™s the perfect spot for easy access to everything. Inside, you'll find plenty of natural light and a spacious layout, with two large bedrooms. The smaller bedroom comfortably fits a king-sized bed, while the larger one includes a walk-through closet and ensuite access to a 4-piece bath. Enjoy extra storage with a hall closet, pantry, and additional balcony unit. The parking stall is right in front, making winter mornings easy, with additional parking available. The condo is well-managed, with fees covering heat and water. Recent updates include new siding and shingles. A healthy reserve fund rounds out this fantastic opportunity!

Built in 1981

Essential Information

| | |
|----------------|-----------|
| MLS® # | E4429887 |
| Price | \$119,900 |
| Bedrooms | 2 |
| Bathrooms | 1.00 |
| Full Baths | 1 |
| Square Footage | 811 |
| Acres | 0.00 |



| | |
|------------|------------------------|
| Year Built | 1981 |
| Type | Condo / Townhouse |
| Sub-Type | Lowrise Apartment |
| Style | Single Level Apartment |
| Status | Active |

Community Information

| | |
|-------------|----------|
| Address | N/A |
| Area | Edmonton |
| Subdivision | Kirkness |
| City | Edmonton |
| County | ALBERTA |
| Province | AB |
| Postal Code | T5Y 2H5 |

Amenities

| | |
|-----------|-------------------------|
| Amenities | Patio, Storage-In-Suite |
| Parking | Stall |

Interior

| | |
|-------------------|---|
| Interior Features | ensuite bathroom |
| Appliances | Dishwasher-Built-In, Refrigerator, Stove-Electric |
| Heating | Baseboard, Combination |
| # of Stories | 4 |
| Stories | 1 |
| Has Basement | Yes |
| Basement | None, No Basement |

Exterior

| | |
|-------------------|--|
| Exterior | Wood, Vinyl |
| Exterior Features | Playground Nearby, Public Transportation, Schools, Shopping Nearby |
| Roof | Asphalt Shingles |
| Construction | Wood, Vinyl |
| Foundation | Concrete Perimeter |

Additional Information

| | |
|----------------|-----------------|
| Date Listed | April 9th, 2025 |
| Days on Market | 24 |
| Zoning | Zone 35 |

Condo Fee \$436

DATA IS DEEMED RELIABLE BUT IS NOT GUARANTEED ACCURATE BY THE REALTORS® ASSOCIATION OF EDMONTON. COPYRIGHT 2025 BY THE REALTORS® ASSOCIATION OF EDMONTON. ALL RIGHTS RESERVED.Trademarks are owned or controlled by the Canadian Real Estate Association (CREA) and identify real estate professionals who are members of CREA (REALTOR®, REALTORS®) and/or the quality of services they provide (MLS®, Multiple Listing Service®)

Listing information last updated on May 3rd, 2025 at 6:17pm MDT