

## \$465,000 - 12 Ivy Crescent, Sherwood Park

MLS® #E4430712

**\$465,000**

5 Bedroom, 2.50 Bathroom, 1,136 sqft

Single Family on 0.00 Acres

Maplewood (Sherwood Park), Sherwood Park,  
AB

WELL CARED FOR HOME,WITH HUGE  
BACKYARD,LIVING ROOM/KITCHEN NEW  
PAINT /FLOORING LAST YEAR,GREAT  
LOCATION.

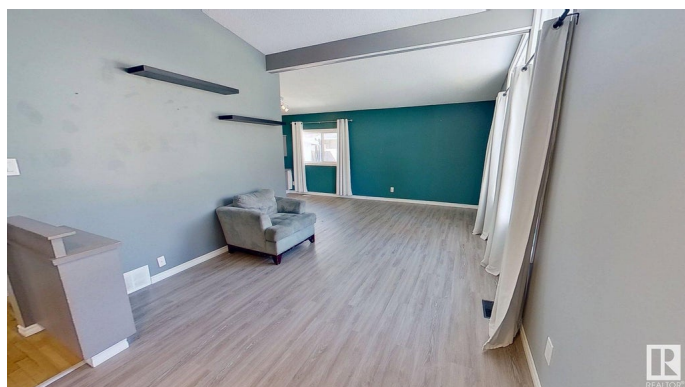
Built in 1970

### Essential Information

|                |                        |
|----------------|------------------------|
| MLS® #         | E4430712               |
| Price          | \$465,000              |
| Bedrooms       | 5                      |
| Bathrooms      | 2.50                   |
| Full Baths     | 2                      |
| Half Baths     | 1                      |
| Square Footage | 1,136                  |
| Acres          | 0.00                   |
| Year Built     | 1970                   |
| Type           | Single Family          |
| Sub-Type       | Detached Single Family |
| Style          | Bungalow               |
| Status         | Active                 |

### Community Information

|             |                           |
|-------------|---------------------------|
| Address     | 12 Ivy Crescent           |
| Area        | Sherwood Park             |
| Subdivision | Maplewood (Sherwood Park) |
| City        | Sherwood Park             |



|             |         |
|-------------|---------|
| County      | ALBERTA |
| Province    | AB      |
| Postal Code | T8A 1W4 |

### **Amenities**

|                |   |
|----------------|---|
| Amenities      | Detectors Smoke, Fire Pit, Gazebo, Greenhouse, Hot Water Electric, Insulation-Upgraded, Low Flw/Dual Flush Toilet, No Smoking Home, Parking-Extra, Parking-Plug-Ins, R.V. Storage |
| Parking Spaces | 4   |
| Parking        | Double Garage Detached  |

### **Interior**

|                   |                           |
|-------------------|---------------------------|
| Interior Features | ensuite bathroom          |
| Appliances        | None                      |
| Heating           | Forced Air-1, Natural Gas |
| Stories           | 2                         |
| Has Basement      | Yes                       |
| Basement          | Full, Finished            |

### **Exterior**

|                   |  |
|-------------------|--|
| Exterior          | Wood, Stucco   |
| Exterior Features | Airport Nearby, Fenced, Fruit Trees/Shrubs, Landscaped, Paved Lane, Playground Nearby, Public Transportation, Schools, Shopping Nearby, Vegetable Garden |
| Roof              | Asphalt Shingles   |
| Construction      | Wood, Stucco   |
| Foundation        | Concrete Perimeter   |

### **Additional Information**

|                |                  |
|----------------|------------------|
| Date Listed    | April 14th, 2025 |
| Days on Market | 22               |
| Zoning         | Zone 25          |

DATA IS DEEMED RELIABLE BUT IS NOT GUARANTEED ACCURATE BY THE REALTORS® ASSOCIATION OF EDMONTON. COPYRIGHT 2025 BY THE REALTORS® ASSOCIATION OF EDMONTON. ALL RIGHTS RESERVED.Trademarks are owned or controlled by the Canadian Real Estate Association (CREA) and identify real estate professionals who are members of CREA (REALTOR®, REALTORS®) and/or the quality of services they provide (MLS®, Multiple Listing Service®)

Listing information last updated on May 5th, 2025 at 9:47pm MDT