

## \$435,000 - 6428 15 Avenue, Edmonton

MLS® #E4431642

**\$435,000**

4 Bedroom, 2.00 Bathroom, 1,044 sqft

Single Family on 0.00 Acres

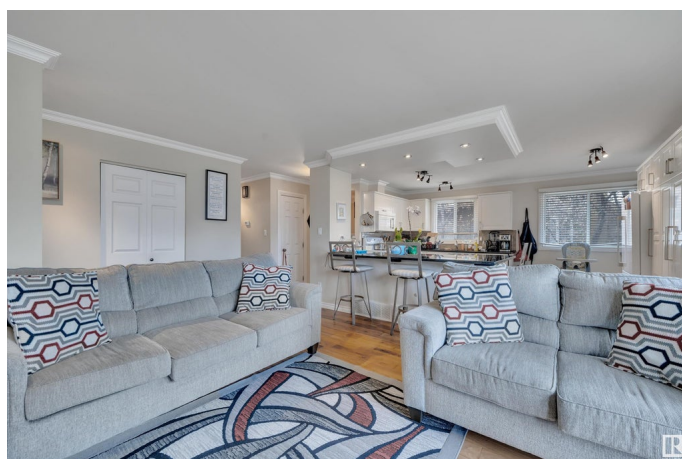
Sakaw, Edmonton, AB

Welcome home to this upgraded 2+2 Bungalow in the beautiful community of Sakaw! Situated on a huge pie lot with an oversized heated garage and central A/C! This home features hardwood flooring, crown molding, granite counter tops, tons of kitchen storage, large island and an electric fireplace. It has a massive primary bedroom with walk in closet and 2 piece ensuite and an additional bedroom and 4 piece bathroom completes the main floor. The basement features a huge rec room, 2 additional sized bedrooms, bathroom, laundry and storage! This home is situated close to schools, shopping, parks and public transit. Just minutes away from Millwoods rec centre and Grey nuns!

Built in 1978

### Essential Information

MLS® #	E4431642
Price	\$435,000
Bedrooms	4
Bathrooms	2.00
Full Baths	1
Half Baths	2
Square Footage	1,044
Acres	0.00
Year Built	1978



Type	Single Family
Sub-Type	Detached Single Family
Style	Bungalow
Status	Active

### Community Information

Address	6428 15 Avenue
Area	Edmonton
Subdivision	Sakaw
City	Edmonton
County	ALBERTA
Province	AB
Postal Code	T6L 1S6

### Amenities

Amenities	No Smoking Home
Parking	Double Garage Detached, Over Sized

### Interior

Interior Features	ensuite bathroom
Appliances	Air Conditioning-Central, Dishwasher-Built-In, Dryer, Microwave Hood Fan, Refrigerator, Stove-Electric, Washer, Garage Heater
Heating	Forced Air-1, Natural Gas
Fireplace	Yes
Fireplaces	Wall Mount
Stories	2
Has Basement	Yes
Basement	Full, Finished

### Exterior

Exterior	Wood, Brick, Metal, Vinyl
Exterior Features	Fenced, Flat Site, Golf Nearby, Level Land, Public Transportation, Schools, Shopping Nearby
Roof	Asphalt Shingles
Construction	Wood, Brick, Metal, Vinyl
Foundation	Concrete Perimeter

### School Information

Elementary	Sakaw School
------------	--------------

MiddlekisÅªwÅ¸tisiwin School

HighJ Percy Page

Additional Information

Date ListedApril 18th, 2025

Days on Market73

ZoningZone 29

DATA IS DEEMED RELIABLE BUT IS NOT GUARANTEED ACCURATE BY THE REALTORSÅ® ASSOCIATION OF EDMONTON. COPYRIGHT 2025 BY THE REALTORSÅ® ASSOCIATION OF EDMONTON. ALL RIGHTS RESERVED.Trademarks are owned or controlled by the Canadian Real Estate Association (CREA) and identify real estate professionals who are members of CREA (REALTORÅ®, REALTORSÅ®) and/or the quality of services they provide (MLSÅ®, Multiple Listing ServiceÅ®)

Listing information last updated on June 30th, 2025 at 3:18pm MDT