

\$579,900 - 102 Anise Close, Leduc

MLS® #E4432441

\$579,900

5 Bedroom, 2.50 Bathroom, 2,364 sqft

Single Family on 0.00 Acres

Deer Valley, Leduc, AB

Beautiful 2 storey home is located in a quiet cul-de-sac & a beautiful lot with Ravine Views. The huge backyard has a no-maintenance 2 tiered deck, hottub & loads of space. Inside the 2nd storey grand entrance you have your 1st living room, dining room, beautiful open staircase. Spacious office with a cool brick wall accent, 2 piece powder room, main floor laundry. The updated kitchen with lots of cabinets, quartz counters & butcher block island leads to eating area with garden door to your deck & family room with fireplace & soaring ceilings with floor to ceiling windows & motorized blinds. So much morning light in these rooms- beautiful. Hardwood floors, central AC. Upstairs offers 3 bedrooms, primary suite is lovely w/ a walk in closet & ensuite with jacuzzi tub, separate shower. Bedroom 2 features vaulted ceilings & its own private balcony. Perfect spot for evening sunsets. Basement is partially finished with 2 bedrooms, flex space, lots of room to finish w/ 6th bedroom potential. Immaculate!!

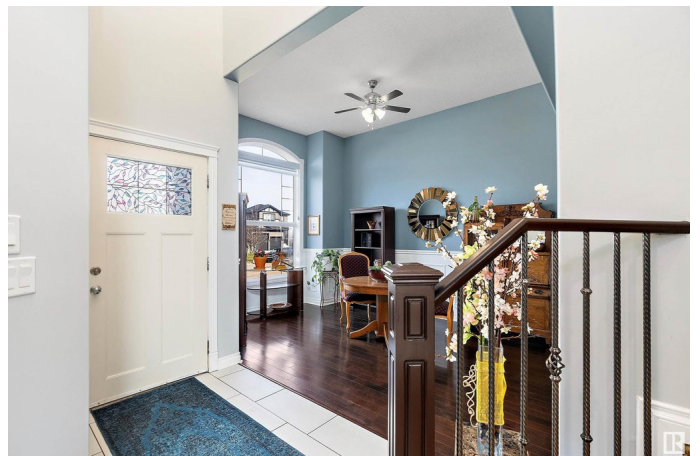
Built in 2007

Essential Information

MLS® # E4432441

Price \$579,900

Bedrooms 5



Bathrooms	2.50
Full Baths	2
Half Baths	1
Square Footage	2,364
Acres	0.00
Year Built	2007
Type	Single Family
Sub-Type	Detached Single Family
Style	2 Storey
Status	Active

Community Information

Address	102 Anise Close
Area	Leduc
Subdivision	Deer Valley
City	Leduc
County	ALBERTA
Province	AB
Postal Code	T9E 0C7

Amenities

Amenities	Air Conditioner, Ceiling 9 ft., Closet Organizers, Deck, Hot Tub
Parking	Double Garage Attached

Interior

Interior Features	ensuite bathroom
Appliances	Air Conditioning-Central, Dishwasher-Built-In, Dryer, Fan-Ceiling, Garage Control, Garage Opener, Microwave Hood Fan, Refrigerator, Stove-Electric, Washer, Window Coverings, Hot Tub
Heating	Forced Air-1, Natural Gas
Fireplace	Yes
Fireplaces	Mantel, Stone Facing, See Remarks
Stories	3
Has Basement	Yes
Basement	Full, Partially Finished

Exterior

Exterior	Wood, Stone, Vinyl
Exterior Features	Cul-De-Sac, Fenced, Golf Nearby, Landscaped, No Back Lane,

	Playground Nearby, Shopping Nearby
Roof	Asphalt Shingles
Construction	Wood, Stone, Vinyl
Foundation	Concrete Perimeter

Additional Information

Date Listed	April 23rd, 2025
Days on Market	10
Zoning	Zone 81

DATA IS DEEMED RELIABLE BUT IS NOT GUARANTEED ACCURATE BY THE REALTORS® ASSOCIATION OF EDMONTON. COPYRIGHT 2025 BY THE REALTORS® ASSOCIATION OF EDMONTON. ALL RIGHTS RESERVED. Trademarks are owned or controlled by the Canadian Real Estate Association (CREA) and identify real estate professionals who are members of CREA (REALTOR®, REALTORS®) and/or the quality of services they provide (MLS®, Multiple Listing Service®)

Listing information last updated on May 2nd, 2025 at 11:47pm MDT