

\$489,900 - 11804 158 Avenue, Edmonton

MLS® #E4432684

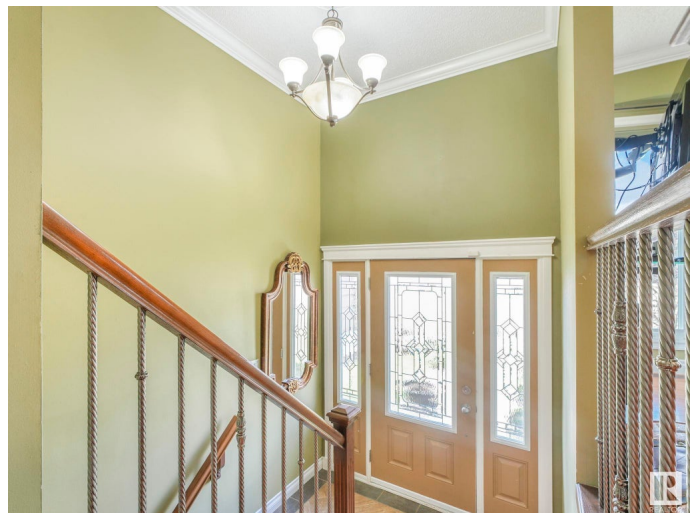
\$489,900

5 Bedroom, 2.50 Bathroom, 1,224 sqft
Single Family on 0.00 Acres

Dunluce, Edmonton, AB

BACK IN THE MARKET! GORGEOUS, METICULOUSLY MAINTAINED & W/A FULLY FIN 2-BEDRM, BATH & KITCHEN BSMT? You read it right! Smart living meets family-friendly lifestyle in this FULLY RENOVATED BI-LEVEL tucked into a QUIET cul-de-sac. With a stylish main floor & SEPARATE ENTRNCE FOR THE BSMNT, itâ€™s ideal for multigenerational families. Upstairs features elegant updatesâ€™ HARDWOOD FLOORS, CROWN MOULDING, MEDALLIONS, WINDOWS, LIGHTS, IRON RAILINGS, FRESH PAINT & a show-stopping kitchen w/ STAINLESS STEEL APPLIANCES, QUARTZ COUNTERS & SLEEK CABINETRY. Two modern bathrms, refreshed bedrms, & QUALITY finishes throughout add comfort & value. Downstairs, FF W/ KITCHEN, PRIVATE LIVING SPACE W/ ITS OWN ENTRANCE, BIG WINDOWS, perfect for the extended family. Outside, enjoy a PROFESSIONALLY LANDSCAPED & WHITE-FENCED YARD, OVERSIZED DOUBLE GRAGE & TONS OF STREET PRKNG, NEWER SIDING, FENCE, SHINGLES (2022), ELECTRICAL, & the list goes on! Close to schools, shopping, YMCA, & transit â€™ offers both versatility & strong potential.

Built in 1976



Essential Information

MLS® #	E4432684
Price	\$489,900
Bedrooms	5
Bathrooms	2.50
Full Baths	2
Half Baths	1
Square Footage	1,224
Acres	0.00
Year Built	1976
Type	Single Family
Sub-Type	Detached Single Family
Style	Bi-Level
Status	Active

Community Information

Address	11804 158 Avenue
Area	Edmonton
Subdivision	Dunluce
City	Edmonton
County	ALBERTA
Province	AB
Postal Code	T5X 2K4

Amenities

Amenities	Detectors Smoke, No Smoking Home, Parking-Extra, Parking-Visitor, See Remarks
Parking Spaces	4
Parking	Double Garage Detached

Interior

Interior Features	ensuite bathroom
Appliances	Dishwasher-Built-In, Dryer, Hood Fan, Microwave Hood Fan, Washer, Refrigerators-Two, Stoves-Two
Heating	Forced Air-1, Natural Gas
Stories	2
Has Suite	Yes
Has Basement	Yes
Basement	Full, Finished

Exterior

Exterior	Wood, Stucco, Vinyl
Exterior Features	Corner Lot, Cul-De-Sac, Fenced, Fruit Trees/Shrubs, Park/Reserve, Public Transportation, Schools, Shopping Nearby
Roof	Asphalt Shingles
Construction	Wood, Stucco, Vinyl
Foundation	Concrete Perimeter

School Information

Elementary	Dunluce School
Middle	Rosslyn School
High	Queen Elizabeth School

Additional Information

Date Listed	April 25th, 2025
Days on Market	9
Zoning	Zone 27

DATA IS DEEMED RELIABLE BUT IS NOT GUARANTEED ACCURATE BY THE REALTORS® ASSOCIATION OF EDMONTON. COPYRIGHT 2025 BY THE REALTORS® ASSOCIATION OF EDMONTON. ALL RIGHTS RESERVED.Trademarks are owned or controlled by the Canadian Real Estate Association (CREA) and identify real estate professionals who are members of CREA (REALTOR®, REALTORS®) and/or the quality of services they provide (MLS®, Multiple Listing Service®)

Listing information last updated on May 4th, 2025 at 12:02am MDT