

\$424,000 - 1533 24 Street, Edmonton

MLS® #E4433222

\$424,000

4 Bedroom, 2.50 Bathroom, 1,499 sqft

Single Family on 0.00 Acres

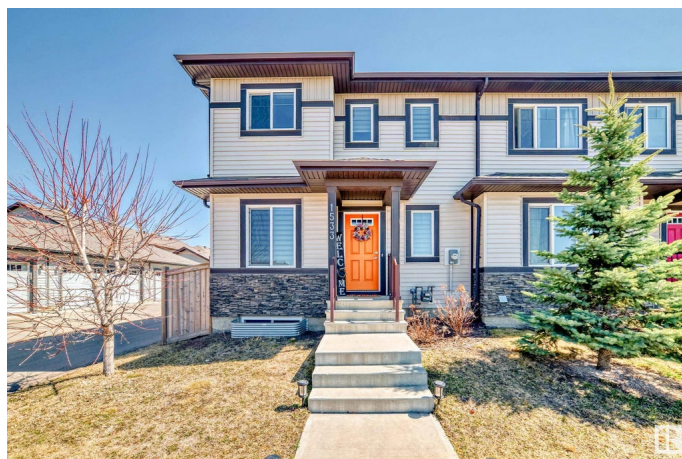
Laurel, Edmonton, AB

Well maintained 2-story end unit home with NO CONDO FEE located in a quiet and family-friendly community. A den to the left as you enter and a 2-pc toilet on the right. An open design between the modern kitchen, living room, and dining room. All stainless steel appliances are included with plenty of cabinets. The master bedroom upstairs comes with an ensuite and walk-in closet. Two good sized bedrooms are waiting for your kids to enjoy. The washer and dryer are upstairs and can save you time to go down to the basement. An additional partially finished basement welcomes you to a rec room and another room for your guest. You can enjoy the deck with your family and friends for a nice BBQ. The separate double-car garage is perfect for 2 cars.

Built in 2016

Essential Information

| | |
|----------------|-----------|
| MLS® # | E4433222 |
| Price | \$424,000 |
| Bedrooms | 4 |
| Bathrooms | 2.50 |
| Full Baths | 2 |
| Half Baths | 1 |
| Square Footage | 1,499 |
| Acres | 0.00 |



| | |
|------------|----------------------|
| Year Built | 2016 |
| Type | Single Family |
| Sub-Type | Residential Attached |
| Style | 2 Storey |
| Status | Active |

Community Information

| | |
|-------------|----------------|
| Address | 1533 24 Street |
| Area | Edmonton |
| Subdivision | Laurel |
| City | Edmonton |
| County | ALBERTA |
| Province | AB |
| Postal Code | T6T 2B9 |

Amenities

| | |
|-----------|--|
| Amenities | Deck, Hot Water Natural Gas, No Smoking Home, HRV System |
| Parking | Double Garage Detached, Over Sized |

Interior

| | |
|-------------------|---|
| Interior Features | ensuite bathroom |
| Appliances | Dishwasher-Built-In, Dryer, Garage Opener, Microwave Hood Fan, Refrigerator, Stove-Electric, Washer |
| Heating | Forced Air-1, Natural Gas |
| Stories | 2 |
| Has Basement | Yes |
| Basement | Full, Partially Finished |

Exterior

| | |
|-------------------|--|
| Exterior | Wood, Vinyl |
| Exterior Features | Back Lane, Corner Lot, Fenced, Fruit Trees/Shrubs, Golf Nearby, Landscaped, Playground Nearby, Public Transportation, Schools, Shopping Nearby |
| Roof | Asphalt Shingles |
| Construction | Wood, Vinyl |
| Foundation | Concrete Perimeter |

Additional Information

| | |
|----------------|------------------|
| Date Listed | April 28th, 2025 |
| Days on Market | 5 |

Zoning

Zone 30

DATA IS DEEMED RELIABLE BUT IS NOT GUARANTEED ACCURATE BY THE REALTORS® ASSOCIATION OF EDMONTON. COPYRIGHT 2025 BY THE REALTORS® ASSOCIATION OF EDMONTON. ALL RIGHTS RESERVED. Trademarks are owned or controlled by the Canadian Real Estate Association (CREA) and identify real estate professionals who are members of CREA (REALTOR®, REALTORS®) and/or the quality of services they provide (MLS®, Multiple Listing Service®)

Listing information last updated on May 3rd, 2025 at 12:17pm MDT