

\$500,000 - 14303 101 Avenue, Edmonton

MLS® #E4439572

\$500,000

0 Bedroom, 0.00 Bathroom,
Single Family on 0.00 Acres

Grovenor, Edmonton, AB

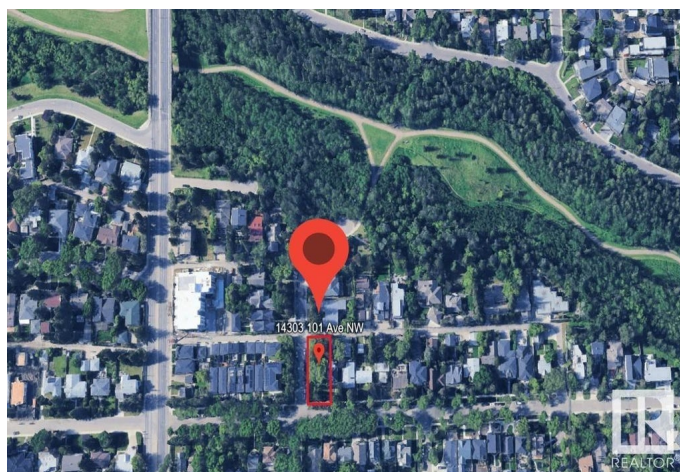
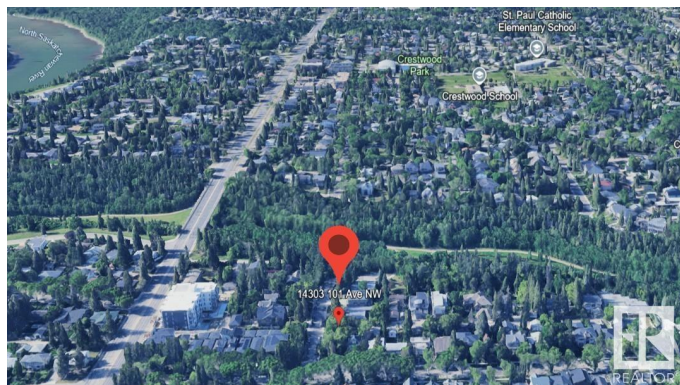
Executive Corner Lot in Prestigious Grovenor, just Steps to MacKinnon Ravine & MacKinnon Ravine Park. Stunning new builds and character homes are all around this property with the Valley Line West LRT only 2 blocks away. Measuring 31.5â€™ x 136â€™ giving you numerous options and the seller can custom build for you, or you can purchase the lot outright.

Essential Information

| | |
|-----------|-----------------|
| MLS® # | E4439572 |
| Price | \$500,000 |
| Bathrooms | 0.00 |
| Acres | 0.00 |
| Type | Single Family |
| Sub-Type | Vacant Lot/Land |
| Status | Active |

Community Information

| | |
|-------------|------------------|
| Address | 14303 101 Avenue |
| Area | Edmonton |
| Subdivision | Grovenor |
| City | Edmonton |
| County | ALBERTA |
| Province | AB |
| Postal Code | T5N 0K7 |



Amenities

Parking Parking Pad Cement/Paved, Stall, See Remarks

Interior

Heating Natural Gas

Exterior

Exterior Features Corner Lot, Level Land, Park/Reserve, Picnic Area, Public Swimming Pool, Public Transportation, Schools, Shopping Nearby

Additional Information

Date Listed May 30th, 2025

Days on Market 64

Zoning Zone 21

DATA IS DEEMED RELIABLE BUT IS NOT GUARANTEED ACCURATE BY THE REALTORS® ASSOCIATION OF EDMONTON. COPYRIGHT 2025 BY THE REALTORS® ASSOCIATION OF EDMONTON. ALL RIGHTS RESERVED.Trademarks are owned or controlled by the Canadian Real Estate Association (CREA) and identify real estate professionals who are members of CREA (REALTOR®, REALTORS®) and/or the quality of services they provide (MLS®, Multiple Listing Service®)
Listing information last updated on August 2nd, 2025 at 9:02pm MDT