

## \$419,900 - 15020 96 Street, Edmonton

MLS® #E4439646

**\$419,900**

3 Bedroom, 1.50 Bathroom, 1,316 sqft

Single Family on 0.00 Acres

Evansdale, Edmonton, AB

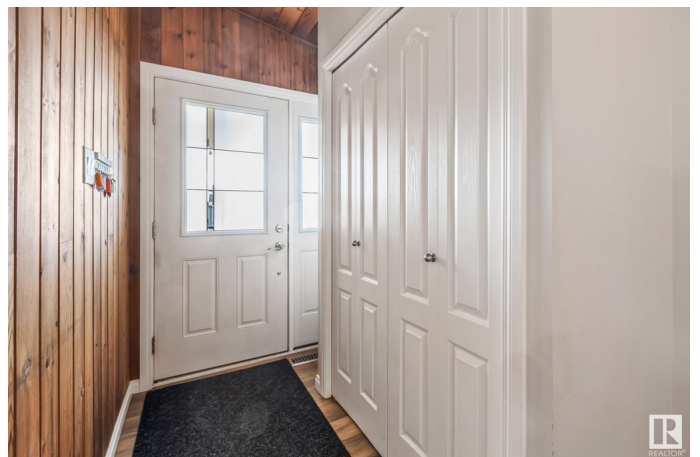
This meticulously maintained bungalow from the 70's gives you the perfect retro home with beneficial upgrades. Through the main foyer you find a large living space with vaulted ceilings and west facing windows to let in the sunshine. Not only is there space to host dinner parties in the separate dining there is also ample room for everyday meals in the updated eat-in kitchen. Down the main hall you find 3 spacious bedrooms. A 4 piece updated main bath and the primary suite featuring walk-in closet and en-suite. New laminate flooring flows throughout the main floor. The basement has a few finishes and is just waiting to be transformed into your family's main hang out spot. If you enjoy spending your time outside during the summer there is a covered carport in the front to catch all the afternoon sun. If you prefer the fresh morning sun the nearly 1/4 acre yard gives you plenty of options to create your very own oasis. A double detached garage completes the property. Bonus newer roof and HE furnace as well.

Built in 1971

### Essential Information

MLS® # E4439646

Price \$419,900



Bedrooms	3
Bathrooms	1.50
Full Baths	1
Half Baths	1
Square Footage	1,316
Acres	0.00
Year Built	1971
Type	Single Family
Sub-Type	Detached Single Family
Style	Bungalow
Status	Active

### Community Information

Address	15020 96 Street
Area	Edmonton
Subdivision	Evansdale
City	Edmonton
County	ALBERTA
Province	AB
Postal Code	T5E 4B1

### Amenities

Amenities	Vaulted Ceiling
Parking	Double Garage Detached, Single Carport

### Interior

Interior Features	ensuite bathroom
Appliances	Dishwasher-Built-In, Dryer, Refrigerator, Stove-Electric, Washer, Window Coverings
Heating	Forced Air-1, Natural Gas
Stories	1
Has Basement	Yes
Basement	Full, Unfinished

### Exterior

Exterior	Wood
Exterior Features	Back Lane, Corner Lot, Fenced, Flat Site, Golf Nearby, Picnic Area, Playground Nearby, Public Swimming Pool, Public Transportation, Schools, Shopping Nearby

Roof	Asphalt Shingles
Construction	Wood
Foundation	Concrete Perimeter

**Additional Information**

Date Listed	May 30th, 2025
Days on Market	23
Zoning	Zone 02

DATA IS DEEMED RELIABLE BUT IS NOT GUARANTEED ACCURATE BY THE REALTORS® ASSOCIATION OF EDMONTON. COPYRIGHT 2025 BY THE REALTORS® ASSOCIATION OF EDMONTON. ALL RIGHTS RESERVED.Trademarks are owned or controlled by the Canadian Real Estate Association (CREA) and identify real estate professionals who are members of CREA (REALTOR®, REALTORS®) and/or the quality of services they provide (MLS®, Multiple Listing Service®)

Listing information last updated on June 22nd, 2025 at 11:47am MDT