

\$229,900 - 40 1179 Summerside Drive, Edmonton

MLS® #E4444367

\$229,900

2 Bedroom, 1.00 Bathroom, 892 sqft

Condo / Townhouse on 0.00 Acres

Summerside, Edmonton, AB

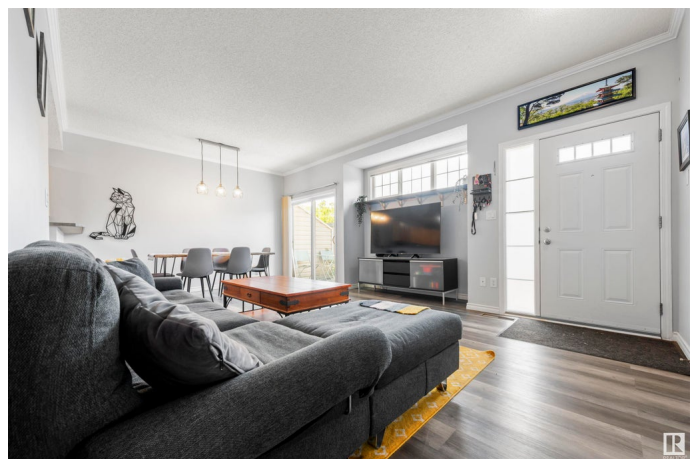
Style+charm welcomes you to this beautiful two bedroom carriage style condo in the family community of Summerside. From the moment you walk-in you will fall in love with the open concept design. The spacious living room boasts new luxury vinyl floors (extending through) + a sliding door to the private patio. The kitchen has maple cabinets, lots of counter space + separate dining area. The primary bedroom is a great size + has a walk-in closet. Completing this unit is a second bedroom, 4pc bathroom + a storage/laundry room. Upgrades: Dishwasher, Washer, Dryer, Hot Water Tanks, Light Fixture, Fresh Paint... the list is endless! Situated in a private part of the complex + next to a green space. Enjoy the year round events + amenities Lake Summerside has to offer including access to the beach (swim, paddle board, kayak, fish), tennis courts, skating, community centre, parks + trails. Close to schools, shops, restaurants, transit + a short drive to major freeways + the airport. Your search is over -- move in + enjoy!

Built in 2005

Essential Information

MLS® # E4444367

Price \$229,900



Bedrooms	2
Bathrooms	1.00
Full Baths	1
Square Footage	892
Acres	0.00
Year Built	2005
Type	Condo / Townhouse
Sub-Type	Townhouse
Style	Bungalow
Status	Active

Community Information

Address	40 1179 Summerside Drive
Area	Edmonton
Subdivision	Summerside
City	Edmonton
County	ALBERTA
Province	AB
Postal Code	T6X 1K1

Amenities

Amenities	Club House, Crawl Space, Lake Privileges, See Remarks
Parking Spaces	1
Parking	Stall

Interior

Appliances	Dishwasher-Built-In, Dryer, Garburator, Hood Fan, Oven-Microwave, Refrigerator, Stove-Electric, Washer, Window Coverings
Heating	Forced Air-1, Natural Gas
Stories	1
Has Basement	Yes
Basement	None, No Basement

Exterior

Exterior	Wood, Stone, Vinyl
Exterior Features	Beach Access, Boating, Corner Lot, Lake Access Property, Low Maintenance Landscape, Playground Nearby, Public Transportation, Schools, Shopping Nearby
Roof	Asphalt Shingles

Construction	Wood, Stone, Vinyl
Foundation	Concrete Perimeter

School Information

Elementary	Michael Strembitsky School
Middle	Michael Strembitsky School
High	J. Percy Page School

Additional Information

Date Listed	June 26th, 2025
Days on Market	24
Zoning	Zone 53
HOA Fees	443.71
HOA Fees Freq.	Annually
Condo Fee	\$354

DATA IS DEEMED RELIABLE BUT IS NOT GUARANTEED ACCURATE BY THE REALTORS® ASSOCIATION OF EDMONTON. COPYRIGHT 2025 BY THE REALTORS® ASSOCIATION OF EDMONTON. ALL RIGHTS RESERVED.Trademarks are owned or controlled by the Canadian Real Estate Association (CREA) and identify real estate professionals who are members of CREA (REALTOR®, REALTORS®) and/or the quality of services they provide (MLS®, Multiple Listing Service®)

Listing information last updated on July 20th, 2025 at 7:47pm MDT