

\$230,000 - 314 11615 Ellerslie Road, Edmonton

MLS® #E4445039

\$230,000

2 Bedroom, 2.00 Bathroom, 897 sqft

Condo / Townhouse on 0.00 Acres

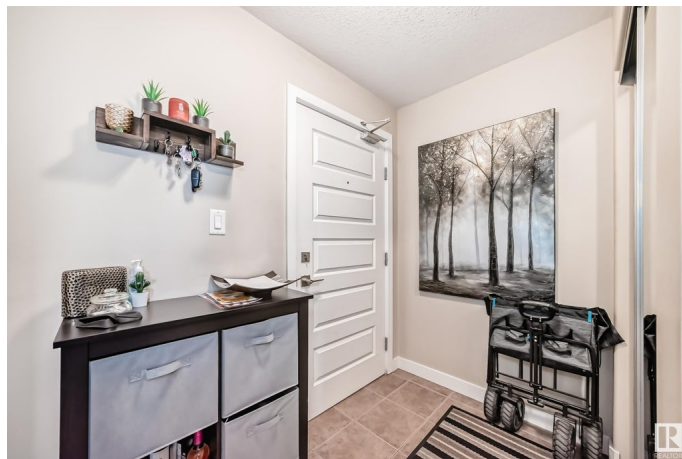
Rutherford (Edmonton), Edmonton, AB

This 2-bedroom, 2-bathroom condo offers a functional floor plan designed for both comfort and efficiency. The primary suite features a walk-through closet leading to a private 3-piece en-suite, while the second bedroom is conveniently located near a 4-piece bathroom, perfect for guests or a home office. The modern kitchen boasts dark cabinetry, granite countertops, and a large island, seamlessly flowing into the open-concept family room, creating a inviting space. A spacious laundry/storage room adds extra convenience. Enjoy outdoor living with a wrap-around balcony, and take advantage of two titled underground parking stalls. Located in a fantastic area, this condo has everything you need.

Built in 2007

Essential Information

| | |
|----------------|-------------------|
| MLS® # | E4445039 |
| Price | \$230,000 |
| Bedrooms | 2 |
| Bathrooms | 2.00 |
| Full Baths | 2 |
| Square Footage | 897 |
| Acres | 0.00 |
| Year Built | 2007 |
| Type | Condo / Townhouse |



| | |
|----------|------------------------|
| Sub-Type | Lowrise Apartment |
| Style | Single Level Apartment |
| Status | Active |

Community Information

| | |
|-------------|--------------------------|
| Address | 314 11615 Ellerslie Road |
| Area | Edmonton |
| Subdivision | Rutherford (Edmonton) |
| City | Edmonton |
| County | ALBERTA |
| Province | AB |
| Postal Code | T6W 0J3 |

Amenities

| | |
|----------------|---|
| Amenities | Detectors Smoke, Exercise Room, Intercom, Parking-Visitor |
| Parking Spaces | 2 |
| Parking | Heated, Underground |

Interior

| | |
|-------------------|--|
| Interior Features | ensuite bathroom |
| Appliances | Dishwasher-Built-In, Dryer, Microwave Hood Fan, Refrigerator, Stove-Electric, Washer |
| Heating | Baseboard, Natural Gas |
| Fireplace | Yes |
| Fireplaces | Corner |
| # of Stories | 4 |
| Stories | 4 |
| Has Basement | Yes |
| Basement | None, No Basement |

Exterior

| | |
|-------------------|---|
| Exterior | Wood, Stone, Vinyl |
| Exterior Features | Flat Site, Landscaped, Public Transportation, Shopping Nearby |
| Roof | Asphalt Shingles |
| Construction | Wood, Stone, Vinyl |
| Foundation | Concrete Perimeter |

Additional Information

| | |
|-------------|-----------------|
| Date Listed | June 29th, 2025 |
|-------------|-----------------|

| | |
|----------------|---------|
| Days on Market | 17 |
| Zoning | Zone 55 |
| Condo Fee | \$639 |

DATA IS DEEMED RELIABLE BUT IS NOT GUARANTEED ACCURATE BY THE REALTORS® ASSOCIATION OF EDMONTON. COPYRIGHT 2025 BY THE REALTORS® ASSOCIATION OF EDMONTON. ALL RIGHTS RESERVED. Trademarks are owned or controlled by the Canadian Real Estate Association (CREA) and identify real estate professionals who are members of CREA (REALTOR®, REALTORS®) and/or the quality of services they provide (MLS®, Multiple Listing Service®)

Listing information last updated on July 16th, 2025 at 2:32am MDT