

## \$623,700 - 2627 200 Street, Edmonton

MLS® #E4445974

### \$623,700

3 Bedroom, 2.50 Bathroom, 2,100 sqft

Single Family on 0.00 Acres

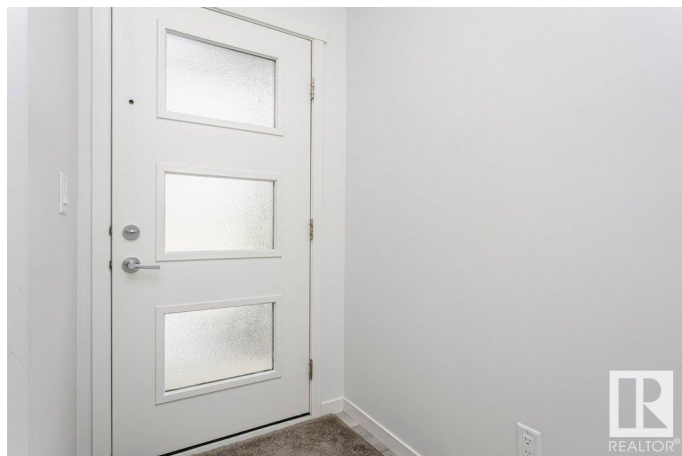
The Uplands, Edmonton, AB

This beautiful well kept 2 storey home built by Coventry offers a total of 3 bedrooms & 3 bathrooms and is located in the community of the Uplands. The entrance leads you to the open concept layout main floor with 9'™ ceiling. The beautifully designed kitchen features ceramic tile backsplash, stainless steel appliances, quartz counter tops, plenty of cabinets and a large pantry. The living room is spacious and includes an electric fireplace and large window facing the backyard that brings in lots of natural daylight. From the dining area, a door leads out to a large upgraded tiered deck and beautifully landscaped & fenced yard. The main level is completed by a 2 pc bathroom. Upstairs the primary bedroom includes a 5 piece ensuite with double sinks and a walk-in closet. The upstairs is completed with 2 good size bdrs, main bath, bonus room and laundry for convenience. Double attached garage is also included and the home has great curb-appeal. Close to schools, transportation and all amenities.

Built in 2021

### Essential Information

|          |           |
|----------|-----------|
| MLS® #   | E4445974  |
| Price    | \$623,700 |
| Bedrooms | 3         |



|                |                        |
|----------------|------------------------|
| Bathrooms      | 2.50                   |
| Full Baths     | 2                      |
| Half Baths     | 1                      |
| Square Footage | 2,100                  |
| Acres          | 0.00                   |
| Year Built     | 2021                   |
| Type           | Single Family          |
| Sub-Type       | Detached Single Family |
| Style          | 2 Storey               |
| Status         | Active                 |

### Community Information

|             |                 |
|-------------|-----------------|
| Address     | 2627 200 Street |
| Area        | Edmonton        |
| Subdivision | The Uplands     |
| City        | Edmonton        |
| County      | ALBERTA         |
| Province    | AB              |
| Postal Code | T6M 1K3         |

### Amenities

|                |   |
|----------------|---|
| Amenities      | Ceiling 9 ft., Deck, Detectors Smoke, Exterior Walls- 2"x6", No Animal Home, No Smoking Home, Vinyl Windows |
| Parking Spaces | 4   |
| Parking        | Double Garage Attached  |

### Interior

|                   |   |
|-------------------|---|
| Interior Features | ensuite bathroom  |
| Appliances        | Dishwasher-Built-In, Dryer, Garage Control, Garage Opener, Hood Fan, Oven-Microwave, Refrigerator, Stove-Electric, Washer, Window Coverings |
| Heating           | Forced Air-1, Natural Gas   |
| Stories           | 2   |
| Has Basement      | Yes   |
| Basement          | Full, Unfinished  |

### Exterior

|                   |  |
|-------------------|--|
| Exterior          | Wood, Vinyl  |
| Exterior Features | Cul-De-Sac, Golf Nearby, Landscaped, Playground Nearby, Public |

|              |  |
|--------------|--|
|              | Transportation, Schools, Shopping Nearby |
| Roof         | Asphalt Shingles                         |
| Construction | Wood, Vinyl                              |
| Foundation   | Concrete Perimeter                       |

### **Additional Information**

|                |                |
|----------------|----------------|
| Date Listed    | July 4th, 2025 |
| Days on Market | 14             |
| Zoning         | Zone 57        |

DATA IS DEEMED RELIABLE BUT IS NOT GUARANTEED ACCURATE BY THE REALTORS® ASSOCIATION OF EDMONTON. COPYRIGHT 2025 BY THE REALTORS® ASSOCIATION OF EDMONTON. ALL RIGHTS RESERVED. Trademarks are owned or controlled by the Canadian Real Estate Association (CREA) and identify real estate professionals who are members of CREA (REALTOR®, REALTORS®) and/or the quality of services they provide (MLS®, Multiple Listing Service®)

Listing information last updated on July 18th, 2025 at 11:32am MDT