

\$499,000 - 1736 Plum Crescent, Edmonton

MLS® #E4447481

\$499,000

3 Bedroom, 2.50 Bathroom, 1,686 sqft
Single Family on 0.00 Acres

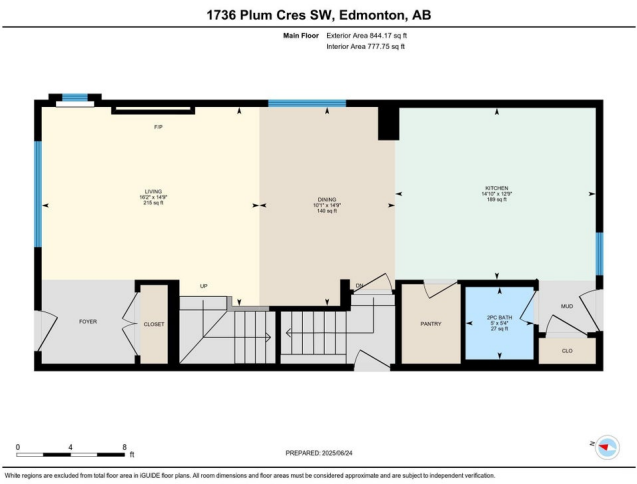
The Orchards At Ellerslie, Edmonton, AB

Situated on a beautifully landscaped corner lot in The Orchards, this Daytona 2022 built home has style, comfort, and smart design. Large windows fill the home with natural light, enhancing the open-concept main floor with luxury vinyl plank, motorized blinds, smart switches, and a striking floor-to-ceiling tiled wall with 60" electric fireplace. The chef's kitchen features quartz counters, two-tone ceiling-height cabinetry, induction cooktop, wall oven, and custom storage solutions. Upstairs offers a spacious primary retreat with a walk-in closet and tiled ensuite, plus a bright bonus room perfect for family living or a home office. The basement includes 9" foundation walls and is ready for future development. Additional perks include A/C, HRV, humidifier, sump pump, upgraded laundry, a fenced yard, front veranda, BBQ gas line, and an extended 20'x24' concrete parking pad. With side entry and smart upgrades throughout, this home is turnkey and ready to enjoy.

Built in 2022

Essential Information

MLS® #	E4447481
Price	\$499,000
Bedrooms	3



Bathrooms	2.50
Full Baths	2
Half Baths	1
Square Footage	1,686
Acres	0.00
Year Built	2022
Type	Single Family
Sub-Type	Detached Single Family
Style	2 Storey
Status	Active

Community Information

Address	1736 Plum Crescent
Area	Edmonton
Subdivision	The Orchards At Ellerslie
City	Edmonton
County	ALBERTA
Province	AB
Postal Code	T6X 2Z8

Amenities

Amenities	Air Conditioner, Detectors Smoke, Front Porch, No Smoking Home, Parking-Extra, Party Room, Recreation Room/Centre, Tennis Courts, HRV System, Natural Gas BBQ Hookup, 9 ft. Basement Ceiling
Parking	Parking Pad Cement/Paved, Rear Drive Access

Interior

Interior Features	ensuite bathroom
Appliances	Air Conditioning-Central, Dishwasher-Built-In, Dryer, Hood Fan, Oven-Built-In, Oven-Microwave, Refrigerator, Washer, Window Coverings, Stove-Countertop Inductn
Heating	Forced Air-1, Natural Gas
Fireplace	Yes
Fireplaces	Wall Mount
Stories	2
Has Basement	Yes
Basement	Full, Unfinished

Exterior

Exterior	Wood, Vinyl
Exterior Features	Back Lane, Low Maintenance Landscape
Roof	Asphalt Shingles
Construction	Wood, Vinyl
Foundation	Concrete Perimeter

School Information

Elementary	Jan Reimer School
Middle	Jan Reimer School
High	J. Percy Page School

Additional Information

Date Listed	July 12th, 2025
Days on Market	67
Zoning	Zone 53
HOA Fees	550
HOA Fees Freq.	Annually

DATA IS DEEMED RELIABLE BUT IS NOT GUARANTEED ACCURATE BY THE REALTORS® ASSOCIATION OF EDMONTON. COPYRIGHT 2025 BY THE REALTORS® ASSOCIATION OF EDMONTON. ALL RIGHTS RESERVED. Trademarks are owned or controlled by the Canadian Real Estate Association (CREA) and identify real estate professionals who are members of CREA (REALTOR®, REALTORS®) and/or the quality of services they provide (MLS®, Multiple Listing Service®)

Listing information last updated on September 17th, 2025 at 8:47am MDT