

\$129,000 - 310 1624 48 Street, Edmonton

MLS® #E4447497

\$129,000

2 Bedroom, 1.00 Bathroom, 873 sqft

Condo / Townhouse on 0.00 Acres

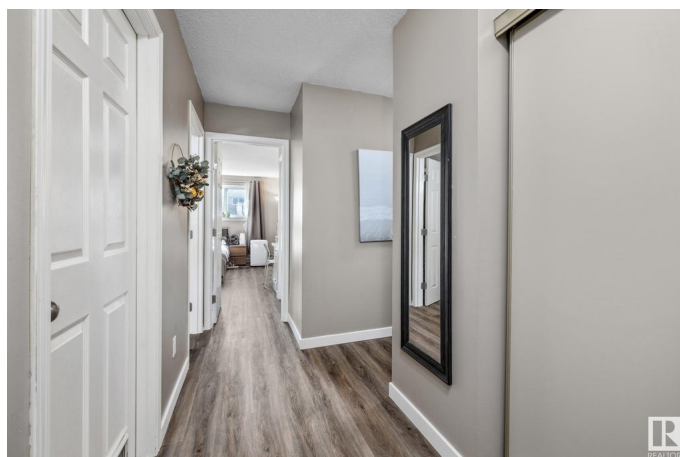
Pollard Meadows, Edmonton, AB

RENOVATED, 2 BED 1 BATH with a TANDEM STALL (Rare for this complex), an open concept kitchen, spacious east facing balcony on the 3rd floor of this quiet, clean, tucked away building! With NEW floors plus baseboards (2025), a beautifully maintained kitchen with tons of storage, newer paint and a fantastic layout this property is great for first time home buyers or downsizers! With a walk in closet in the primary bedroom, huge storage space off the front entrance, and a very spacious living/dining area, this is a very enjoyable space, with tons of natural light from the east facing balcony! Other perks include LOW CONDO FEES, ELEVATOR, and a short walk to the laundry room (same floor). You do not want to miss this one!

Built in 1981

Essential Information

MLS® #	E4447497
Price	\$129,000
Bedrooms	2
Bathrooms	1.00
Full Baths	1
Square Footage	873
Acres	0.00
Year Built	1981



Type	Condo / Townhouse
Sub-Type	Lowrise Apartment
Style	Single Level Apartment
Status	Active

Community Information

Address	310 1624 48 Street
Area	Edmonton
Subdivision	Pollard Meadows
City	Edmonton
County	ALBERTA
Province	AB
Postal Code	T6L 5P1

Amenities

Amenities	Off Street Parking, On Street Parking, Deck, Intercom, No Animal Home, No Smoking Home, Parking-Visitor, Vinyl Windows
Parking Spaces	2
Parking	2 Outdoor Stalls, Tandem

Interior

Appliances	Air Conditioner-Window, Dishwasher-Built-In, Microwave Hood Fan, Refrigerator, Stove-Electric, Window Coverings
Heating	Baseboard, Natural Gas
# of Stories	4
Stories	1
Has Basement	Yes
Basement	None, No Basement

Exterior

Exterior	Wood, Stucco, Vinyl
Exterior Features	Flat Site, Golf Nearby, Level Land, No Back Lane, No Through Road, Park/Reserve, Picnic Area, Playground Nearby, Public Transportation, Schools, Shopping Nearby
Roof	Asphalt Shingles
Construction	Wood, Stucco, Vinyl
Foundation	Concrete Perimeter

Additional Information

Date Listed	July 12th, 2025
-------------	-----------------

Days on Market	67
Zoning	Zone 29
Condo Fee	\$504

DATA IS DEEMED RELIABLE BUT IS NOT GUARANTEED ACCURATE BY THE REALTORS® ASSOCIATION OF EDMONTON. COPYRIGHT 2025 BY THE REALTORS® ASSOCIATION OF EDMONTON. ALL RIGHTS RESERVED. Trademarks are owned or controlled by the Canadian Real Estate Association (CREA) and identify real estate professionals who are members of CREA (REALTOR®, REALTORS®) and/or the quality of services they provide (MLS®, Multiple Listing Service®)

Listing information last updated on September 17th, 2025 at 10:18am MDT