

## \$419,900 - 103 51 Street, Edmonton

MLS® #E4447633

**\$419,900**

3 Bedroom, 3.50 Bathroom, 1,305 sqft

Single Family on 0.00 Acres

Charlesworth, Edmonton, AB

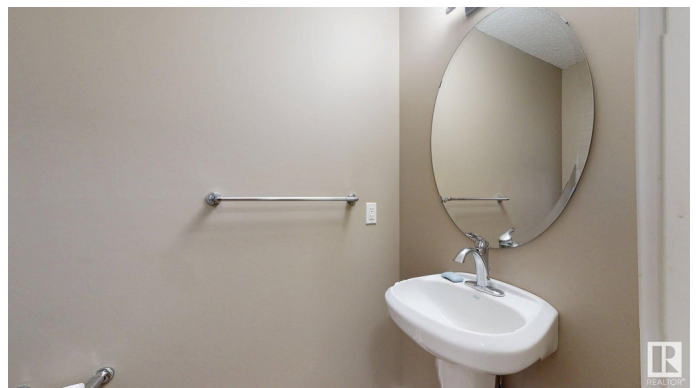
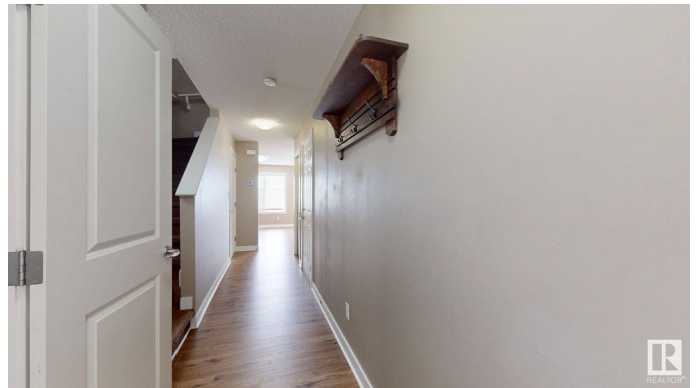
Welcome to this move-in-ready half duplex in the highly sought-after community of Charlesworth. Offering 3 spacious bedrooms, 3.5 bathrooms, and a fully finished basement, this home delivers space, comfort, and convenience for the whole family. The main floor features a bright and open layout with a functional kitchen, cozy living room, dining area & a convenient half bath. Upstairs, youâ€™ll find three well-sized bedrooms and two full bathrooms, including a primary suite with it's own private ensuite. The basement is fully finished, with extra living space complete with a full bathroomâ€”perfect for a rec room, home office. Flooring throughout the home includes mix of carpet, tile & brand new flooring on main with LVP. Step outside to enjoy the fully fenced backyard with a great-sized deckâ€”ideal for summer BBQs or relaxing evenings. Located on a quiet crescent just minutes from Ellerslie School, parks, a playground, & minutes to the shopping centre on Ellerslie Road & quick acces to Anthony Henday.

Built in 2012

### Essential Information

MLS® # E4447633

Price \$419,900



Bedrooms	3
Bathrooms	3.50
Full Baths	3
Half Baths	1
Square Footage	1,305
Acres	0.00
Year Built	2012
Type	Single Family
Sub-Type	Half Duplex
Style	2 Storey
Status	Active

### Community Information

Address	103 51 Street
Area	Edmonton
Subdivision	Charlesworth
City	Edmonton
County	ALBERTA
Province	AB
Postal Code	T6X 0Z7

### Amenities

Amenities	Car Wash, Deck, See Remarks
Parking	Single Garage Attached

### Interior

Interior Features	ensuite bathroom
Appliances	Dishwasher-Built-In, Dryer, Hood Fan, Refrigerator, Stove-Electric, Washer
Heating	Forced Air-1, Natural Gas
Stories	3
Has Basement	Yes
Basement	Full, Finished

### Exterior

Exterior	Wood, Vinyl
Exterior Features	Fenced, Landscaped, Playground Nearby, Schools, Shopping Nearby
Roof	Asphalt Shingles
Construction	Wood, Vinyl

Foundation                      Concrete Perimeter

**Additional Information**

Date Listed                      July 14th, 2025

Days on Market                7

Zoning                            Zone 53

DATA IS DEEMED RELIABLE BUT IS NOT GUARANTEED ACCURATE BY THE REALTORS® ASSOCIATION OF EDMONTON. COPYRIGHT 2025 BY THE REALTORS® ASSOCIATION OF EDMONTON. ALL RIGHTS RESERVED.Trademarks are owned or controlled by the Canadian Real Estate Association (CREA) and identify real estate professionals who are members of CREA (REALTOR®, REALTORS®) and/or the quality of services they provide (MLS®, Multiple Listing Service®)

Listing information last updated on July 21st, 2025 at 7:17am MDT