

\$585,000 - 11739 27 Avenue, Edmonton

MLS® #E4448048

\$585,000

5 Bedroom, 3.50 Bathroom, 1,931 sqft

Single Family on 0.00 Acres

Blue Quill, Edmonton, AB

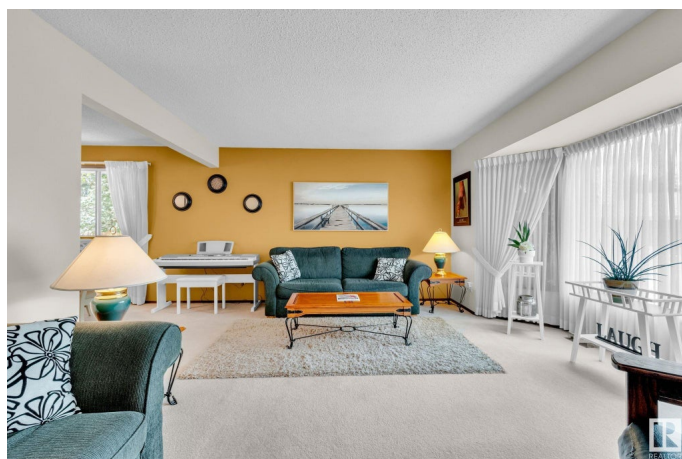
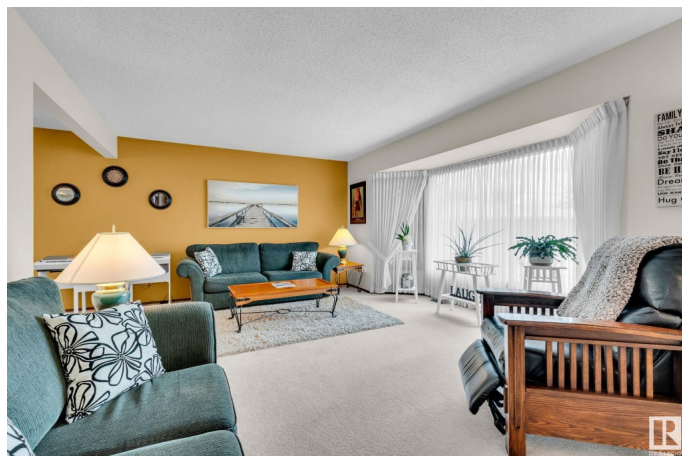
Fall in love with this stunning 5-bedroom family home tucked away on a quiet street in Blue Quill. Bursting with pride of ownership, it features a renovated kitchen with custom white cabinetry, granite island, and sleek stainless/black appliances. The main floor offers a formal dining room, den, great room, and a main floor bedroom perfect for guests, in-laws, or a home office. Upstairs, you'll find 3 generous bedrooms including a spacious primary suite with ensuite. The finished basement adds a guest bedroom, rec room with electric fireplace, bar, bathroom, and hot tub! Step outside to your private southwest-facing, pie-shaped backyard oasis backing onto a serene treed walkway—ideal for gardening, BBQs, soccer with the kids, or letting the dog run free. Enjoy a covered patio, fire pit, planter boxes, and a newly stained cedar deck. Upgrades include newer upstairs windows, central vac, 3-car driveway, and shed. Close to bus stops, Century Park, LRT, YMCA & U of A. A true gem in a sought-after community!

Built in 1977

Essential Information

MLS® # E4448048

Price \$585,000



Bedrooms	5
Bathrooms	3.50
Full Baths	3
Half Baths	1
Square Footage	1,931
Acres	0.00
Year Built	1977
Type	Single Family
Sub-Type	Detached Single Family
Style	2 Storey
Status	Active

Community Information

Address	11739 27 Avenue
Area	Edmonton
Subdivision	Blue Quill
City	Edmonton
County	ALBERTA
Province	AB
Postal Code	T6J 3N7

Amenities

Amenities	Deck, Hot Tub
Parking	Double Garage Attached

Interior

Interior Features	ensuite bathroom
Appliances	Dishwasher-Built-In, Microwave Hood Fan, Refrigerator, Storage Shed, Stove-Countertop Electric, Hot Tub
Heating	Forced Air-2, Natural Gas
Stories	3
Has Basement	Yes
Basement	Full, Finished

Exterior

Exterior	Wood, Brick, Stucco, Vinyl
Exterior Features	Fenced, Golf Nearby, Landscaped, Playground Nearby, Private Setting, Public Transportation, Shopping Nearby
Roof	Asphalt Shingles

Construction	Wood, Brick, Stucco, Vinyl
Foundation	Concrete Perimeter

School Information

Elementary	Sweet Grass School
Middle	Vernon Barford School
High	Harry Ainlay High School

Additional Information

Date Listed	July 16th, 2025
Days on Market	6
Zoning	Zone 16

DATA IS DEEMED RELIABLE BUT IS NOT GUARANTEED ACCURATE BY THE REALTORS® ASSOCIATION OF EDMONTON. COPYRIGHT 2025 BY THE REALTORS® ASSOCIATION OF EDMONTON. ALL RIGHTS RESERVED.Trademarks are owned or controlled by the Canadian Real Estate Association (CREA) and identify real estate professionals who are members of CREA (REALTOR®, REALTORS®) and/or the quality of services they provide (MLS®, Multiple Listing Service®)

Listing information last updated on July 22nd, 2025 at 3:47am MDT