

\$359,900 - 1108 175 Street, Edmonton

MLS® #E4448860

\$359,900

3 Bedroom, 2.50 Bathroom, 1,209 sqft

Single Family on 0.00 Acres

Windermere, Edmonton, AB

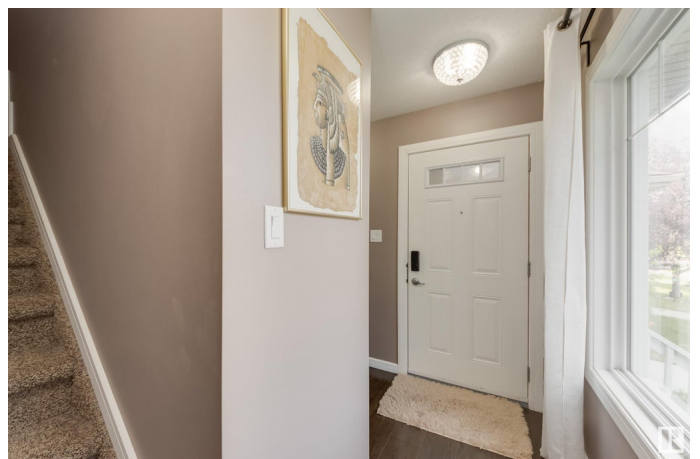
Outstanding Value in Prime Windermere Location – No Condo Fees! Welcome to this beautifully maintained townhome located in the heart of Windermere, offering exceptional value at just \$359,900! This is a rare opportunity to own a no-condo-fee property walking distance to local Italian store, pharmacy, gym, daycare, & more – everything you need just steps away! Inside, you'll find a spacious 3-bedroom + den layout featuring a convenient built-in desk area upstairs, perfect for working from home or homework time. Finished basement adds flexibility, an additional 500 Sq.ft to the total living space, with a large rec room, full bathroom, & a generous laundry/storage area. Enjoy a functional kitchen with an open dining/living space & direct access to the minimal maintenance, low-upkeep outdoor space – enjoy gatherings without the yard work. Features attached single garage & private driveway. Perfect for families, first-time buyers, or investors, this move-in ready home combines location, layout & affordability

Built in 2013

Essential Information

MLS® # E4448860

Price \$359,900



Bedrooms	3
Bathrooms	2.50
Full Baths	2
Half Baths	1
Square Footage	1,209
Acres	0.00
Year Built	2013
Type	Single Family
Sub-Type	Residential Attached
Style	2 Storey
Status	Active

Community Information

Address	1108 175 Street
Area	Edmonton
Subdivision	Windermere
City	Edmonton
County	ALBERTA
Province	AB
Postal Code	T6W 2B8

Amenities

Amenities	Deck
Parking	Single Garage Attached

Interior

Appliances	Dishwasher-Built-In, Dryer, Garage Control, Garage Opener, Oven-Microwave, Refrigerator, Stove-Electric, Washer, Window Coverings
Heating	Forced Air-1, Natural Gas
Stories	3
Has Basement	Yes
Basement	Full, Finished

Exterior

Exterior	Wood, Vinyl
Exterior Features	Back Lane, Low Maintenance Landscape, Schools, Shopping Nearby
Roof	Asphalt Shingles
Construction	Wood, Vinyl

Foundation Concrete Perimeter

Additional Information

Date Listed July 18th, 2025

Days on Market 6

Zoning Zone 56

DATA IS DEEMED RELIABLE BUT IS NOT GUARANTEED ACCURATE BY THE REALTORS® ASSOCIATION OF EDMONTON. COPYRIGHT 2025 BY THE REALTORS® ASSOCIATION OF EDMONTON. ALL RIGHTS RESERVED.Trademarks are owned or controlled by the Canadian Real Estate Association (CREA) and identify real estate professionals who are members of CREA (REALTOR®, REALTORS®) and/or the quality of services they provide (MLS®, Multiple Listing Service®)

Listing information last updated on July 24th, 2025 at 7:47pm MDT