

\$215,000 - 316 3715 Whitelaw Lane, Edmonton

MLS® #E4454778

\$215,000

2 Bedroom, 2.00 Bathroom, 903 sqft

Condo / Townhouse on 0.00 Acres

Windermere, Edmonton, AB

Upgraded 3rd floor corner unit with 2 bedrooms + den, 2 full bathrooms, and 2 underground parking stalls! This bright, open-concept condo features hardwood and ceramic tile flooring throughout, fresh paint, and a stylish kitchen with granite counters, stainless steel appliances, modern tile backsplash, and a large eating bar. The living room is filled with natural light and opens to a spacious wrap-around balcony with gas hookup for your BBQ. Both bedrooms include walk-through California closets, with the primary offering a private 3-piece ensuite. Extra perks include built-in speakers, pre-wired iPod/iPhone docks, and in-suite laundry. The building itself offers fantastic amenities like a fitness room, hobby room, security cameras, and high-speed elevators. Ideally located near shopping, Terwillegar Rec Centre, the river valley, and with quick access to the Henday and Edmonton International Airport, this condo is the perfect blend of comfort, convenience, and style!

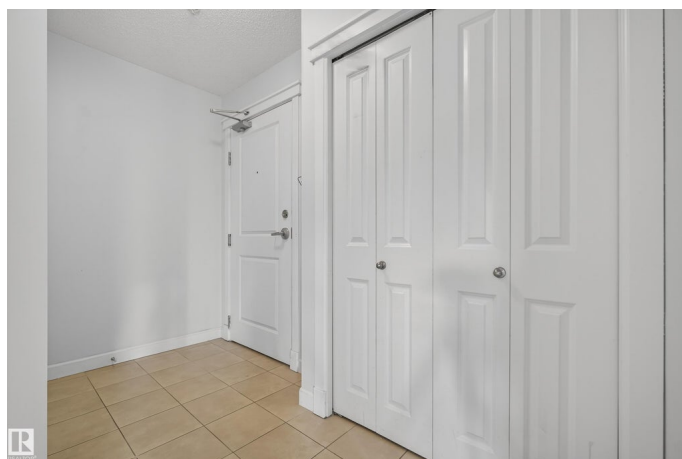
Built in 2011

Essential Information

MLS® # E4454778

Price \$215,000

Bedrooms 2



Bathrooms	2.00
Full Baths	2
Square Footage	903
Acres	0.00
Year Built	2011
Type	Condo / Townhouse
Sub-Type	Lowrise Apartment
Style	Single Level Apartment
Status	Active

Community Information

Address	316 3715 Whitelaw Lane
Area	Edmonton
Subdivision	Windermere
City	Edmonton
County	ALBERTA
Province	AB
Postal Code	T6W 2C3

Amenities

Amenities	Exercise Room, Parking-Visitor, Social Rooms, Television Connection
Parking Spaces	2
Parking	Underground

Interior

Interior Features	ensuite bathroom
Appliances	Dishwasher-Built-In, Dryer, Garage Control, Microwave Hood Fan, Refrigerator, Stove-Electric, Washer, Window Coverings
Heating	Hot Water, Natural Gas
# of Stories	4
Stories	4
Has Basement	Yes
Basement	None, No Basement

Exterior

Exterior	Wood, Brick, Composition
Exterior Features	Airport Nearby, Playground Nearby, Public Transportation, Schools, Shopping Nearby, See Remarks
Roof	Asphalt Shingles

Construction	Wood, Brick, Composition
Foundation	Concrete Perimeter

Additional Information

Date Listed	August 26th, 2025
Days on Market	1
Zoning	Zone 56
HOA Fees	120
HOA Fees Freq.	Annually
Condo Fee	\$648

DATA IS DEEMED RELIABLE BUT IS NOT GUARANTEED ACCURATE BY THE REALTORS® ASSOCIATION OF EDMONTON. COPYRIGHT 2025 BY THE REALTORS® ASSOCIATION OF EDMONTON. ALL RIGHTS RESERVED.Trademarks are owned or controlled by the Canadian Real Estate Association (CREA) and identify real estate professionals who are members of CREA (REALTOR®, REALTORS®) and/or the quality of services they provide (MLS®, Multiple Listing Service®)

Listing information last updated on August 27th, 2025 at 5:47pm MDT