

## \$524,900 - 6136 165 Avenue, Edmonton

MLS® #E4455835

**\$524,900**

5 Bedroom, 3.00 Bathroom, 1,569 sqft

Single Family on 0.00 Acres

Matt Berry, Edmonton, AB

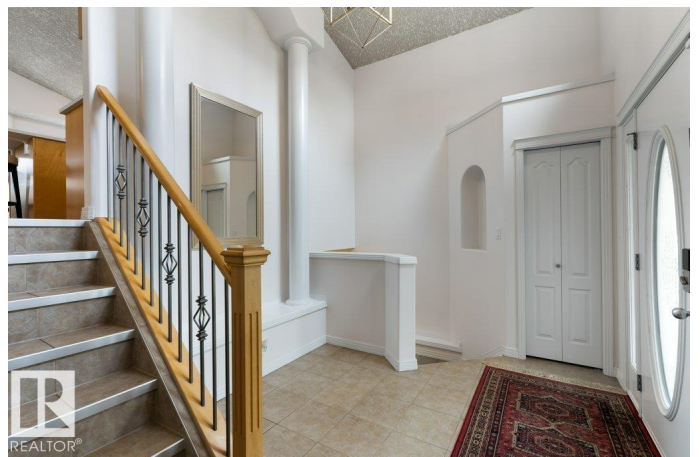
Welcome to this absolutely IMMACULATE 1568 sqft bilevel home. Offering a total of 5 bedrooms and 3 full bathrooms. Many recent upgrades include: New QUARTZ countertops and backsplash in the kitchen, new QUARTZ countertops in two bathrooms, new gas line with new GAS COOKTOP and built in oven, luxury vinyl plank flooring in the upstairs bedrooms and a brand new RENOVATED 3pce primary ENSUITE. The layout is bright and open and features a huge front entrance with soaring high ceilings, open concept kitchen with corner pantry and island, living room with VAULTED CEILINGS and GAS FIREPLACE and a spacious dining nook. There are two main floor bedrooms and a main 4pce bathroom. The primary suite is lofted above the garage has a walk in closet and 3pce ensuite. The FULLY FINISHED, recently updated, basement has an additional two bedrooms, renovated 4pce bathroom, and lots of storage. CENTRAL A/C, fully fenced yard with patio and deck and oversized garage complete this beautiful home.

Built in 2004

### Essential Information

MLS® # E4455835

Price \$524,900



Bedrooms	5
Bathrooms	3.00
Full Baths	3
Square Footage	1,569
Acres	0.00
Year Built	2004
Type	Single Family
Sub-Type	Detached Single Family
Style	Bi-Level
Status	Active

### **Community Information**

Address	6136 165 Avenue
Area	Edmonton
Subdivision	Matt Berry
City	Edmonton
County	ALBERTA
Province	AB
Postal Code	T5Y 3L5

### **Amenities**

Amenities	Air Conditioner, Deck, Vaulted Ceiling
Parking	Double Garage Attached

### **Interior**

Interior Features	ensuite bathroom
Appliances	Air Conditioning-Central, Dishwasher-Built-In, Dryer, Garage Control, Garage Opener, Garburator, Hood Fan, Oven-Built-In, Refrigerator, Stove-Countertop Gas, Washer, Water Softener, Window Coverings
Heating	Forced Air-1, Natural Gas
Fireplace	Yes
Fireplaces	Mantel, Tile Surround
Stories	3
Has Basement	Yes
Basement	Full, Finished

### **Exterior**

Exterior	Wood, Stucco
Exterior Features	Fenced, Landscaped, Schools, Shopping Nearby

Roof	Asphalt Shingles
Construction	Wood, Stucco
Foundation	Concrete Perimeter

**Additional Information**

Date Listed	September 3rd, 2025
Days on Market	3
Zoning	Zone 03

DATA IS DEEMED RELIABLE BUT IS NOT GUARANTEED ACCURATE BY THE REALTORS® ASSOCIATION OF EDMONTON. COPYRIGHT 2025 BY THE REALTORS® ASSOCIATION OF EDMONTON. ALL RIGHTS RESERVED.Trademarks are owned or controlled by the Canadian Real Estate Association (CREA) and identify real estate professionals who are members of CREA (REALTOR®, REALTORS®) and/or the quality of services they provide (MLS®, Multiple Listing Service®)

Listing information last updated on September 6th, 2025 at 1:33pm MDT