

\$649,900 - 21 Elise Place, St. Albert

MLS® #E4456322

\$649,900

3 Bedroom, 2.50 Bathroom, 2,257 sqft

Single Family on 0.00 Acres

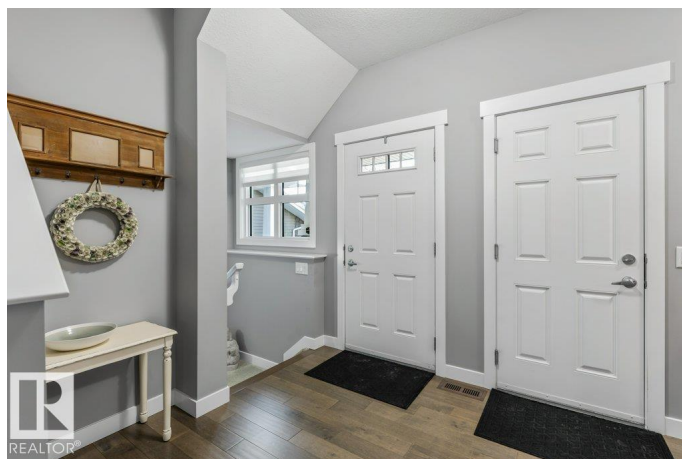
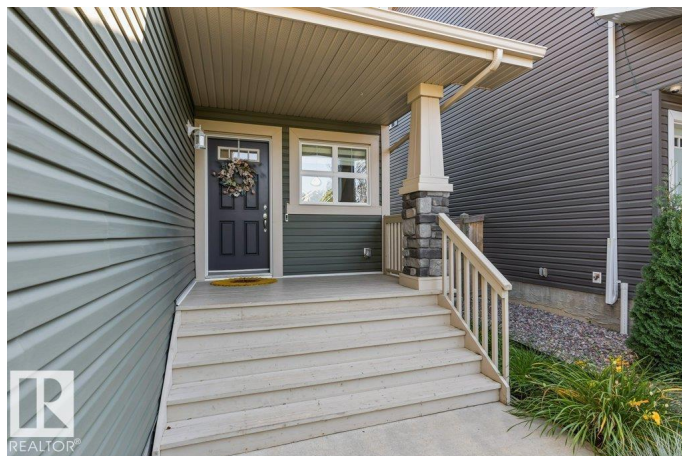
Erin Ridge North, St. Albert, AB

This stunning 2,250 sq ft two-storey is located in the highly desirable community of Erin Ridge North, just a short walk to school and minutes from all amenities. The open and functional layout is perfect for family living, offering 3 bedrooms plus a spacious bonus room and laundry upstairs. The gourmet kitchen is finished with quartz countertops and a convenient walk-through pantry for easy storage and organization. The undeveloped basement provides endless opportunities to create additional living space, whether a rec room, gym, or guest space. The home's location offers easy access to parks, schools, shopping, and major routes, making it ideal for busy families. With its thoughtful design, modern finishes, and unbeatable location, this is the perfect place to call home.

Built in 2015

Essential Information

MLS® #	E4456322
Price	\$649,900
Bedrooms	3
Bathrooms	2.50
Full Baths	2
Half Baths	1
Square Footage	2,257
Acres	0.00



Year Built	2015
Type	Single Family
Sub-Type	Detached Single Family
Style	2 Storey
Status	Active

Community Information

Address	21 Elise Place
Area	St. Albert
Subdivision	Erin Ridge North
City	St. Albert
County	ALBERTA
Province	AB
Postal Code	T8N 7P5

Amenities

Amenities	Deck, Detectors Smoke, No Smoking Home, See Remarks
Parking	Double Garage Attached

Interior

Interior Features	ensuite bathroom
Appliances	Dishwasher-Built-In, Dryer, Oven-Microwave, Refrigerator, Stove-Electric, Washer
Heating	Forced Air-1, Natural Gas
Stories	2
Has Basement	Yes
Basement	Full, Unfinished

Exterior

Exterior	Wood, Vinyl
Exterior Features	Cul-De-Sac, Fenced, Landscaped, Public Transportation, Schools, Shopping Nearby
Roof	Asphalt Shingles
Construction	Wood, Vinyl
Foundation	Concrete Perimeter

Additional Information

Date Listed	September 5th, 2025
Days on Market	2

Zoning

Zone 24

DATA IS DEEMED RELIABLE BUT IS NOT GUARANTEED ACCURATE BY THE REALTORS® ASSOCIATION OF EDMONTON. COPYRIGHT 2025 BY THE REALTORS® ASSOCIATION OF EDMONTON. ALL RIGHTS RESERVED. Trademarks are owned or controlled by the Canadian Real Estate Association (CREA) and identify real estate professionals who are members of CREA (REALTOR®, REALTORS®) and/or the quality of services they provide (MLS®, Multiple Listing Service®)

Listing information last updated on September 7th, 2025 at 1:47pm MDT