

\$499,900 - 7519 170 Avenue, Edmonton

MLS® #E4456355

\$499,900

3 Bedroom, 2.50 Bathroom, 1,497 sqft

Single Family on 0.00 Acres

Schonsee, Edmonton, AB

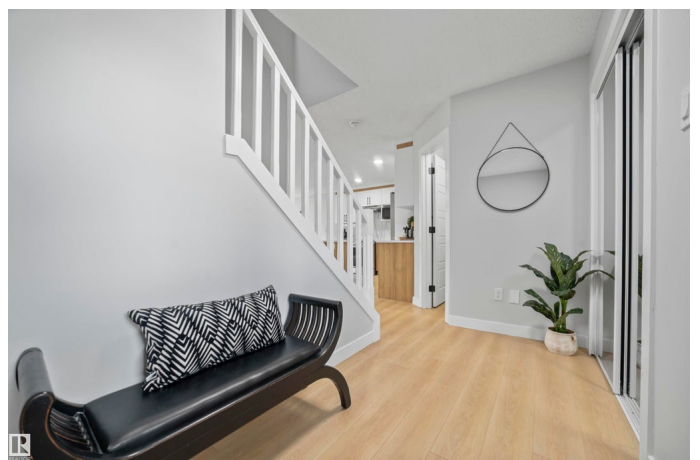
Welcome to this FULLY RENOVATED single-family gem in the desirable community of Schonsee! Step inside and experience a home that feels brand new, showcasing extensive upgrades throughout. From Brand new shingles & brand new vinyl plank flooring (no carpet) to modern blinds, a fully updated kitchen with stylish finishes & BRAND NEW APPLIANCES, every detail has been thoughtfully designed for comfort and style. The open-concept main floor features a cozy fireplace in the living room, perfect for relaxing evenings, while the dining area flows seamlessly into the heart of the home. Step outside to a spacious backyard, ideal for summer BBQs, gardening, or family fun. The DOUBLE ATTACHED GARAGE offers everyday convenience & the unfinished basement provides endless potential to create your dream space. Located near scenic ponds, walking trails & all major amenities, this home combines modern upgrades with a prime location. Why settle for a duplex when you can own a FULLY RENOVATED detached home at the same price!!!

Built in 2006

Essential Information

MLS® # E4456355

Price \$499,900



Bedrooms	3
Bathrooms	2.50
Full Baths	2
Half Baths	1
Square Footage	1,497
Acres	0.00
Year Built	2006
Type	Single Family
Sub-Type	Detached Single Family
Style	2 Storey
Status	Active

Community Information

Address	7519 170 Avenue
Area	Edmonton
Subdivision	Schonsee
City	Edmonton
County	ALBERTA
Province	AB
Postal Code	T5Z 0B2

Amenities

Amenities	Carbon Monoxide Detectors, Detectors Smoke, Hot Water Electric
Parking	Double Garage Attached

Interior

Interior Features	ensuite bathroom
Appliances	Dishwasher-Built-In, Dryer, Garage Control, Garage Opener, Microwave Hood Fan, Refrigerator, Stove-Electric, Washer, Window Coverings
Heating	Forced Air-2, Natural Gas
Fireplace	Yes
Fireplaces	Wall Mount
Stories	2
Has Basement	Yes
Basement	Full, Unfinished

Exterior

Exterior	Wood, Vinyl
Exterior Features	Landscaped, Playground Nearby, Public Transportation, Schools,

	Shopping Nearby
Roof	Asphalt Shingles
Construction	Wood, Vinyl
Foundation	Concrete Perimeter

School Information

Elementary	NORTHMOUNT SCHOOL
Middle	DICKINSFIELD SCHOOL
High	M.E. LAZERTE SCHOOL

Additional Information

Date Listed	September 5th, 2025
Days on Market	2
Zoning	Zone 28

DATA IS DEEMED RELIABLE BUT IS NOT GUARANTEED ACCURATE BY THE REALTORS® ASSOCIATION OF EDMONTON. COPYRIGHT 2025 BY THE REALTORS® ASSOCIATION OF EDMONTON. ALL RIGHTS RESERVED. Trademarks are owned or controlled by the Canadian Real Estate Association (CREA) and identify real estate professionals who are members of CREA (REALTOR®, REALTORS®) and/or the quality of services they provide (MLS®, Multiple Listing Service®)

Listing information last updated on September 7th, 2025 at 1:17pm MDT