

## \$444,000 - 100 Bothwell Place, Sherwood Park

MLS® #E4456425

**\$444,000**

3 Bedroom, 3.5 Bathroom, 1,409 sqft

Single Family on 0.00 Acres

Strathcona Village, Sherwood Park, AB

Welcome to this beautiful 2-storey home in the highly desirable community of Strathcona Village in Sherwood Park! Situated on a spacious corner lot directly beside a park and playground, this property offers an extended backyard feelâ€”perfect for families and outdoor enjoyment. Inside, you'll find 3 bedrooms and 3.5 bathrooms, including a spacious primary suite with a 4-piece ensuite and his & hers closets. The main floor features a cozy living room with a gas fireplace, a bright dining area, and a functional kitchen complete with brand-new dark stainless steel appliances. The fully finished basement adds versatile living space ideal for a rec room, office, or guest suite. Additional highlights include a double detached garage, a new hot water tank, and excellent proximity to transit, shopping, schools, and all other amenities Sherwood Park has to offer. This move-in-ready home blends comfort, style, and convenience in one of the areaâ€™s most family-friendly neighborhoods!

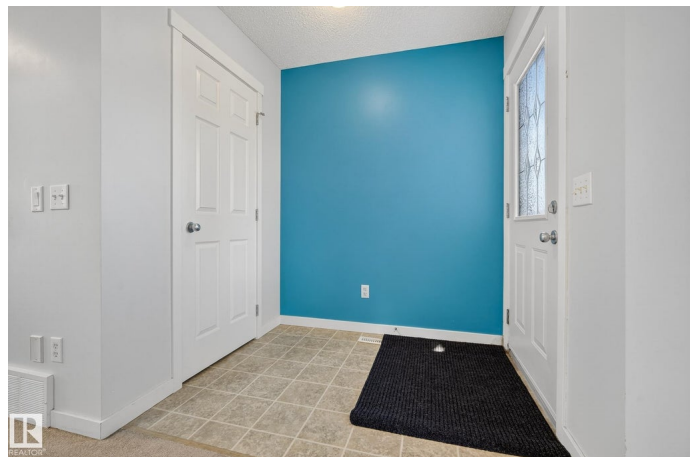
Built in 2003

### Essential Information

MLS® # E4456425

Price \$444,000

Bedrooms 3



Bathrooms	3.50
Full Baths	3
Half Baths	1
Square Footage	1,409
Acres	0.00
Year Built	2003
Type	Single Family
Sub-Type	Detached Single Family
Style	2 Storey
Status	Active

### Community Information

Address	100 Bothwell Place
Area	Sherwood Park
Subdivision	Strathcona Village
City	Sherwood Park
County	ALBERTA
Province	AB
Postal Code	T8H 2M6

### Amenities

Amenities	No Animal Home, No Smoking Home
Parking	Double Garage Detached

### Interior

Interior Features	ensuite bathroom
Appliances	Dishwasher-Built-In, Dryer, Garage Control, Garage Opener, Microwave Hood Fan, Refrigerator, Stove-Electric, Washer, Window Coverings
Heating	Forced Air-1, Natural Gas
Stories	3
Has Basement	Yes
Basement	Full, Finished

### Exterior

Exterior	Wood, Vinyl
Exterior Features	Back Lane, Backs Onto Park/Trees, Corner Lot, Fenced, Flat Site, Low Maintenance Landscape, No Through Road, Picnic Area, Playground Nearby, Public Swimming Pool, Public Transportation, Schools, Shopping Nearby

Roof	Asphalt Shingles
Construction	Wood, Vinyl
Foundation	Concrete Perimeter

**Additional Information**

Date Listed	September 5th, 2025
Days on Market	3
Zoning	Zone 25

DATA IS DEEMED RELIABLE BUT IS NOT GUARANTEED ACCURATE BY THE REALTORS® ASSOCIATION OF EDMONTON. COPYRIGHT 2025 BY THE REALTORS® ASSOCIATION OF EDMONTON. ALL RIGHTS RESERVED.Trademarks are owned or controlled by the Canadian Real Estate Association (CREA) and identify real estate professionals who are members of CREA (REALTOR®, REALTORS®) and/or the quality of services they provide (MLS®, Multiple Listing Service®)

Listing information last updated on September 8th, 2025 at 7:02am MDT