

## \$459,900 - 50 Flagstone Crescent, St. Albert

MLS® #E4456441

**\$459,900**

3 Bedroom, 2.50 Bathroom, 1,233 sqft  
Single Family on 0.00 Acres

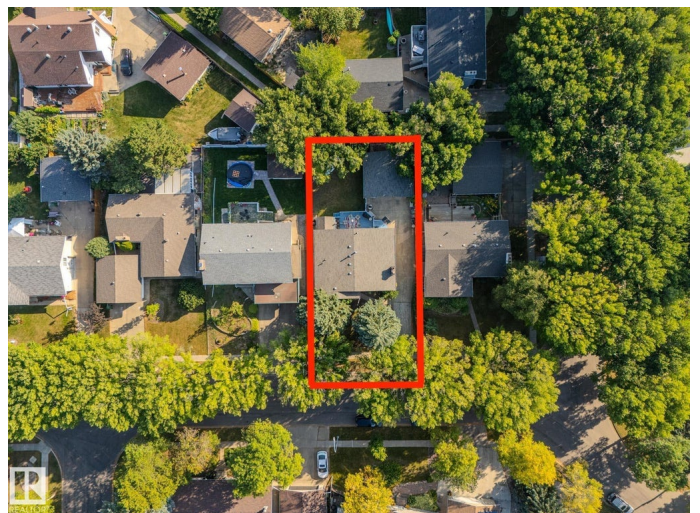
Forest Lawn (St. Albert), St. Albert, AB

HEREâ€™S YOUR CHANCE to live on one of St. Albertâ€™s most desirable, tree-lined streets! This charming bungalow sits on a beautifully established lot that backs onto a walking path, and close proximity to the ravine's access for walks, biking, and year-round outdoor fun at Flagstone Park. Inside, youâ€™ll find a warm, functional layout with inviting living and dining spaces, a practical kitchen, and 2 oversized bedroomsâ€”perfect for young families, downsizers, or anyone seeking single-level living. The developed basement offers laundry, an additional sizable bedroom, family room with a beautiful brick wood-burning fireplace, 3 pc bathroom and lots of storage. The oversized double detached garage provides tons of room for vehicles, toys, and tools. Love the location: youâ€™re steps to great schools, neighbourhood parks and the ODR, with everyday shopping and amenities just minutes away. Quiet, convenient, and community-mindedâ€”this is the bungalow opportunity youâ€™ve been waiting for on a truly special street.

Built in 1972

### Essential Information

MLS® #	E4456441
Price	\$459,900



Bedrooms	3
Bathrooms	2.50
Full Baths	2
Half Baths	1
Square Footage	1,233
Acres	0.00
Year Built	1972
Type	Single Family
Sub-Type	Detached Single Family
Style	Bungalow
Status	Active

### Community Information

Address	50 Flagstone Crescent
Area	St. Albert
Subdivision	Forest Lawn (St. Albert)
City	St. Albert
County	ALBERTA
Province	AB
Postal Code	T8N 1R3

### Amenities

Amenities	Deck, Vaulted Ceiling, Vinyl Windows
Parking	Double Garage Detached, Over Sized

### Interior

Interior Features	ensuite bathroom
Appliances	Dishwasher-Built-In, Dryer, Freezer, Garage Control, Microwave Hood Fan, Refrigerator, Stove-Electric, Washer, Window Coverings
Heating	Forced Air-1, Natural Gas
Fireplace	Yes
Fireplaces	Brick Facing
Stories	2
Has Basement	Yes
Basement	Full, Partially Finished

### Exterior

Exterior	Wood, Vinyl
Exterior Features	Backs Onto Park/Trees, Fenced, Flat Site, Golf Nearby, Landscaped,

Picnic Area, Playground Nearby, Public Swimming Pool, Public Transportation, Schools, Shopping Nearby

Roof	Asphalt Shingles
Construction	Wood, Vinyl
Foundation	Concrete Perimeter

### School Information

Elementary	SAM, École Sacré Coeur
Middle	Fowler, Lorne Akins, Essmy
High	Paul Kane, ESSACHS

### Additional Information

Date Listed	September 5th, 2025
Days on Market	2
Zoning	Zone 24

DATA IS DEEMED RELIABLE BUT IS NOT GUARANTEED ACCURATE BY THE REALTORS® ASSOCIATION OF EDMONTON. COPYRIGHT 2025 BY THE REALTORS® ASSOCIATION OF EDMONTON. ALL RIGHTS RESERVED. Trademarks are owned or controlled by the Canadian Real Estate Association (CREA) and identify real estate professionals who are members of CREA (REALTOR®, REALTORS®) and/or the quality of services they provide (MLS®, Multiple Listing Service®)

Listing information last updated on September 7th, 2025 at 2:32pm MDT