

## \$355,000 - 82 903 Crystallina Nera Way, Edmonton

MLS® #E4458315

**\$355,000**

3 Bedroom, 2.50 Bathroom, 1,549 sqft

Condo / Townhouse on 0.00 Acres

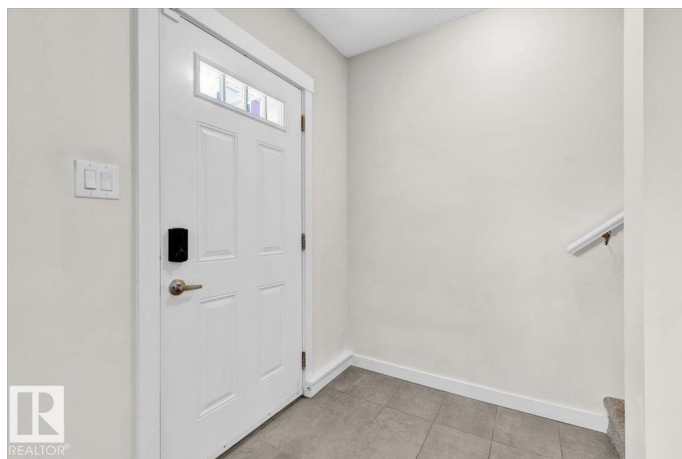
Crystallina Nera West, Edmonton, AB

Gorgeous, well-maintained townhome offering style, space, and convenience! Enjoy low condo fees, a double attached garage, and a versatile entry level perfect for an office, gaming zone, storage, or a welcoming drop area. The bright main floor boasts open-concept living with a spacious kitchen featuring a breakfast bar, ample storage, and easy access to the balcony—plus a 2pc bath and abundant natural light. Upstairs, find two comfortable bedrooms, a 4pc bath, laundry, and a primary suite with a 3pc ensuite. Located in desirable North Edmonton, just minutes to the Henday, Crystallina Lake, walking paths, parks, playgrounds, schools, shopping, and a short drive to multiple golf courses.

Built in 2015

### Essential Information

MLS® #	E4458315
Price	\$355,000
Bedrooms	3
Bathrooms	2.50
Full Baths	2
Half Baths	1
Square Footage	1,549
Acres	0.00



Year Built	2015
Type	Condo / Townhouse
Sub-Type	Townhouse
Style	2 Storey
Status	Active

### Community Information

Address	82 903 Crystallina Nera Way
Area	Edmonton
Subdivision	Crystallina Nera West
City	Edmonton
County	ALBERTA
Province	AB
Postal Code	T5Z 0L6

### Amenities

Amenities	Air Conditioner, Ceiling 9 ft., Detectors Smoke, Parking-Visitor, Smart/Program. Thermostat
Parking	Double Garage Attached

### Interior

Interior Features	ensuite bathroom
Appliances	Air Conditioning-Central, Dishwasher-Built-In, Dryer, Garage Control, Garage Opener, Microwave Hood Fan, Refrigerator, Stove-Electric, Washer, Window Coverings, TV Wall Mount
Heating	Forced Air-1, Natural Gas
Stories	3
Has Basement	Yes
Basement	None, No Basement

### Exterior

Exterior	Wood, Vinyl
Exterior Features	Flat Site, Landscaped, Low Maintenance Landscape, Park/Reserve, Playground Nearby, Public Transportation, Schools, Shopping Nearby
Roof	Asphalt Shingles
Construction	Wood, Vinyl
Foundation	Concrete Perimeter

### Additional Information

Date Listed	September 18th, 2025
-------------	----------------------

Zoning	Zone 28
Condo Fee	\$231

DATA IS DEEMED RELIABLE BUT IS NOT GUARANTEED ACCURATE BY THE REALTORS® ASSOCIATION OF EDMONTON. COPYRIGHT 2025 BY THE REALTORS® ASSOCIATION OF EDMONTON. ALL RIGHTS RESERVED. Trademarks are owned or controlled by the Canadian Real Estate Association (CREA) and identify real estate professionals who are members of CREA (REALTOR®, REALTORS®) and/or the quality of services they provide (MLS®, Multiple Listing Service®)

Listing information last updated on September 18th, 2025 at 2:47pm MDT